

# AU *luminator*



**AULUMINATOR MANUAL**

# **WARNING !**

**THE KNIFE GATE AND / OR MAIN  
GATE MUST BE OPEN BEFORE  
THE BELT IS TURNED ON OR  
IMMEDIATE DAMAGE WILL OCCUR  
TO THE BELT DRIVE SYSTEM –  
REAR GATE AND BELT**



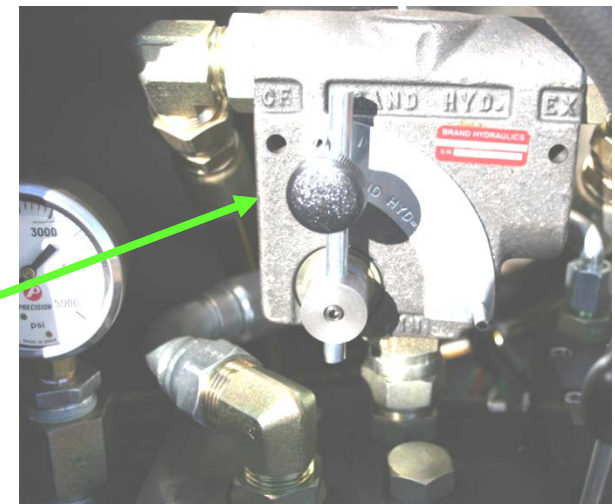
## ELECTRIC / MANUAL VALVE

1) PULL ON THE KNIFE GATE CONTROL LEVER TO RAISE THE KNIFE GATE

2) PULL ON THE MAIN GATE CONTROL LEVER TO RELEASE THE GATE LOCK CYLINDERS AND RAISE THE MAIN GATE

3) PULL ON THE BELT CONTROL LEVER TO TURN THE BELT ON ( IT WILL STAY ON UNTIL IT IS PUSHED BACK OUT OF THE DETENT)

4) ROTATE THE FLOW CONTROL VALVE CLOCKWISE UNTIL THE BELT SPEED IS AS REQUIRED



# MANUAL VALVE



## TO OPEN MAIN GATE:

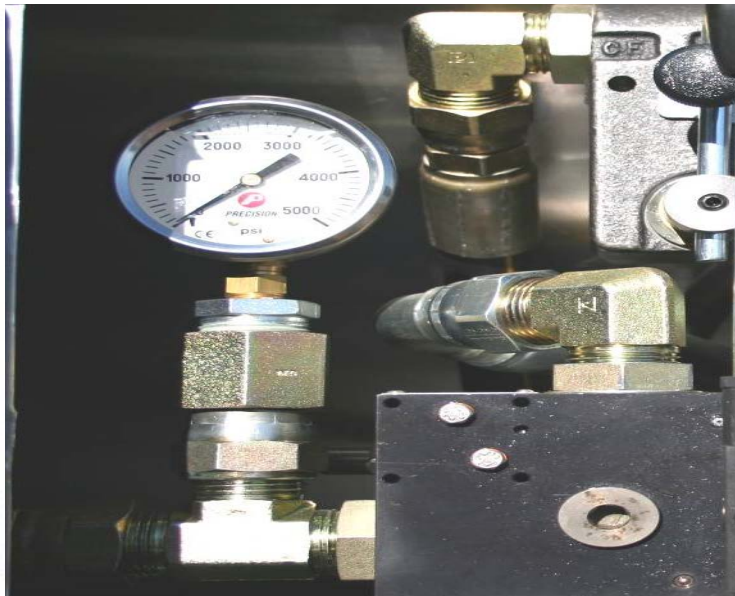
1. Open knife gate (pull knife handle)
2. Retract lock cylinders (pull lock handle)
3. Open main gate slowly, (pull main handle)  
as gate fully opens build pressure to 2000 psi. to hold gate fully open
4. Start belt (pull belt handle)
5. Adjust flow control to desired speed

## TO CLOSE MAIN GATE

1. Stop belt (push belt handle)
2. Close main gate fully (push main handle)
3. Extend lock cylinders (push lock handle)
4. Close knife gate (push knife handle)

*Main and lock controls are linked to avoid damage to the locks and or the main gate. Please leave bridge in place.*

**PRESSURES ON THE GUAGE WILL VARY WITH LOAD AND TEMPERATURE. THE PRESSURES LISTED HERE ARE WHAT YOU SHOULD EXPECT TO SEE UNDER “NORMAL” CONDITIONS . THE SYSTEM RELIEF VALVE IS SET AT 3000 P S I**



**SYSTEM ON 500 PSI  
KNIFE GATE UP 2700 P S I  
KNIFE GATE DOWN 2000 P S I  
MAIN GATE UP 2700 P S I  
MAIN GATE DOWN 1500 P S I  
BELT ON 1000-2700 PSI**

**THE TRUCK NEEDS TO SUPPLY A MINIMUM OF 20 GPM AT 3000 PSI**



**HIGH PRESSURE HYDRAULIC FILTER WITH  
REPLACEABLE ELEMENT**

**THIS IS A SECONDARY FILTER , THE TRUCK  
WET KIT SHOULD BE EQUIPPED WITH A  
PRIMARY RETURN LINE FILTER**

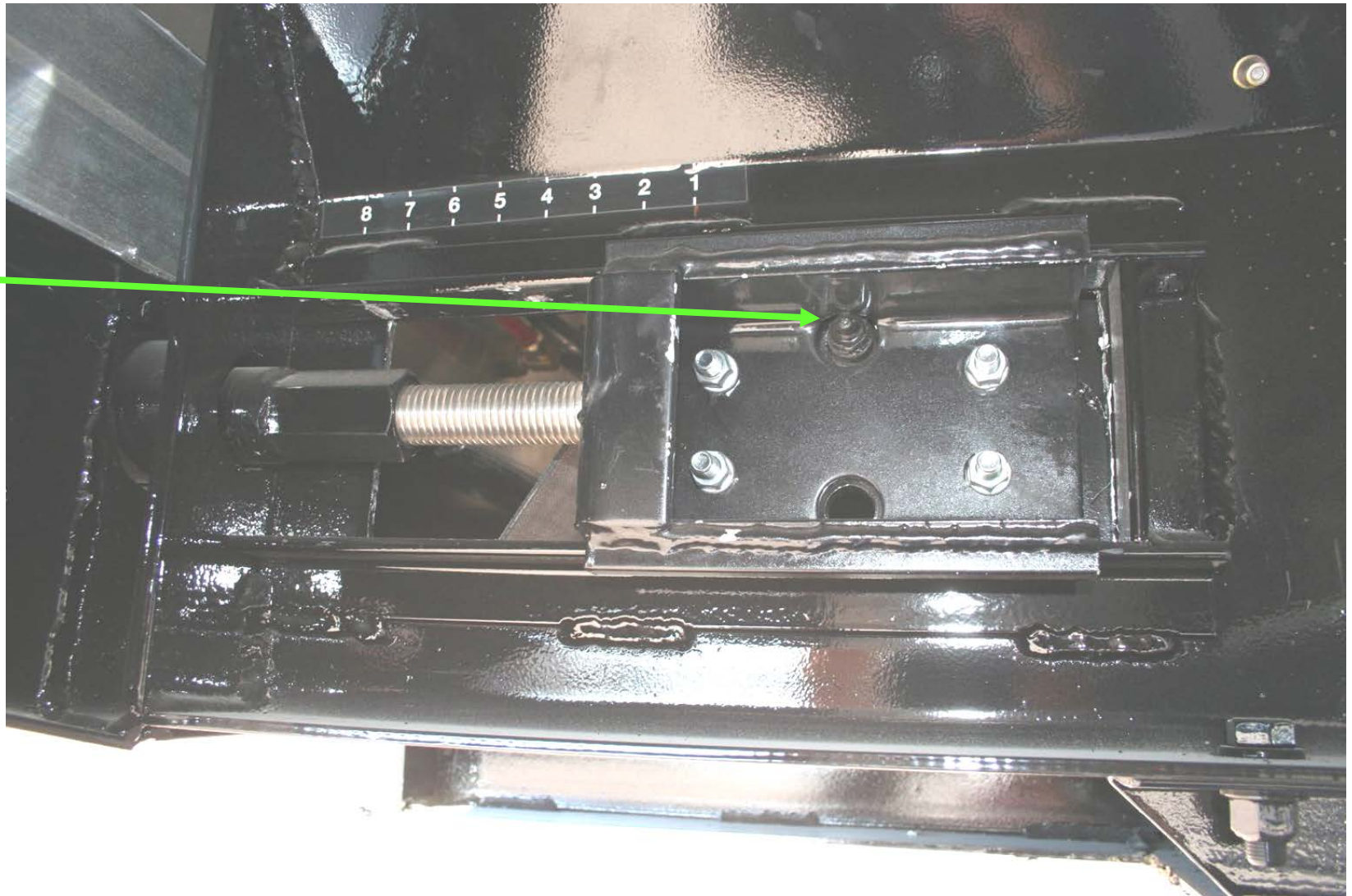


## **BELT ADJUSTMENT :**

**TO TIGHTEN THE BELT, MOVE THE LOCK OFF AND TO THE SIDE , TURN THE ADJUSTING NUT CLOCKWISE UNTIL THE BELT IS BACK UP TO THE PROPER ADJUSTMENT . THE RANGE OF PROPER ADJUSTMENT IS INDICATED BY THE TWO HOLES IN THE ADJUSTMENT INDICATOR LOCATED ON THE SIDE OF THE TRAILER .**

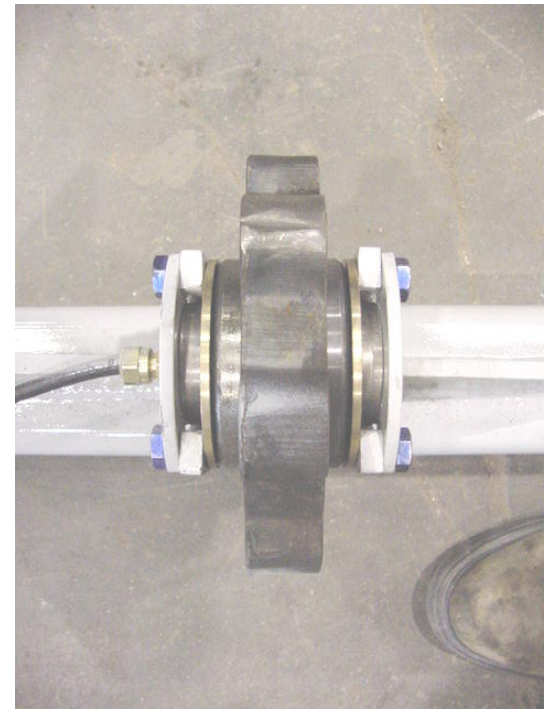
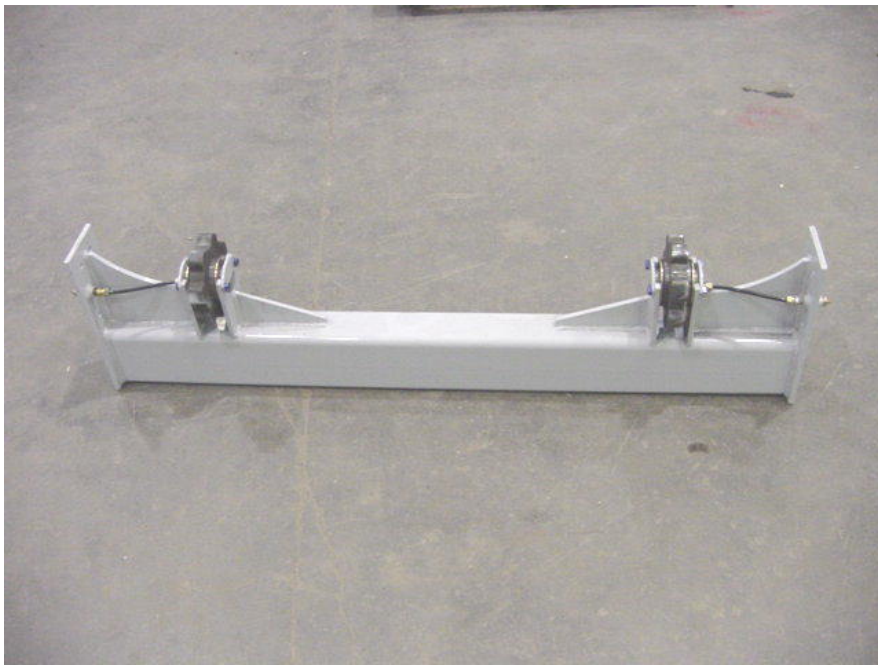


**GREASE  
HERE  
BOTH  
SIDES**



**ADJUST THE FRONT TAKE-UP EVENLY FROM SIDE TO SIDE  
TO KEEP THE BELT TAKE-UP SQUARE IN THE TRAILER**





## FRONT TAKE-UP ASSEMBLY

(information only )



**GREASE  
ZERK**

**REAR BEARING AND SHAFT**

**88HD CHAIN**



**ESKRIDGE GEAR BOX**  
**CHAR-LYNN MOTOR**  
**USE 90WT GEAR OIL**



**FLOOR LINER IS UHMW 3/8  
PLASTIC**

**SIDE LINER IS HMW 3/16 PLASTIC**



SUSPENSION DUMP VALVE  
PUSH VALVE IS SEAL CO 110555  
PILOT VALVE IS SEAL CO 110587

**MANUAL AIR RIDE  
DUMP VALVE – USED  
TO DUMP THE  
SUSPENSION BEFORE  
TRAILER IS PUT ON  
THE LANDING GEAR**

**THIS ELIMINATES THE  
STRESS PUT ON THE  
LANDING GEAR IF THE  
TRAILER AIR  
SUSPENSION SETTLES  
WHILE UNHOOKED  
FROM THE TRACTOR**

**WILL AUTOMATICALLY  
RESET WHEN TRAILER  
BRAKES ARE  
RELEASED,**

**IF TRAILER HAS SAT  
FOR AWHILE, MAKE  
SURE SPRINGS ARE  
INFLATED BEFORE  
MOVING THE TRAILER.**

**WHEN UN-HOOKING, SET TRAILER BRAKES,  
LEAVE TRUCK BRAKE OFF. GET OUT AND PUSH  
IN THE TRAILERS DUMP VALVE, START  
CRANKING LEGS, BEFORE THE LEGS TOUCH  
MAKE SURE ALL AIR HAS EXHAUSTED, THE  
TRAILER WILL CREEP FORWARD JUST A FEW  
INCHES. CRANK TO PUT WEIGHT ON THE LEGS  
AND UNHOOK FROM THE TRAILER.**



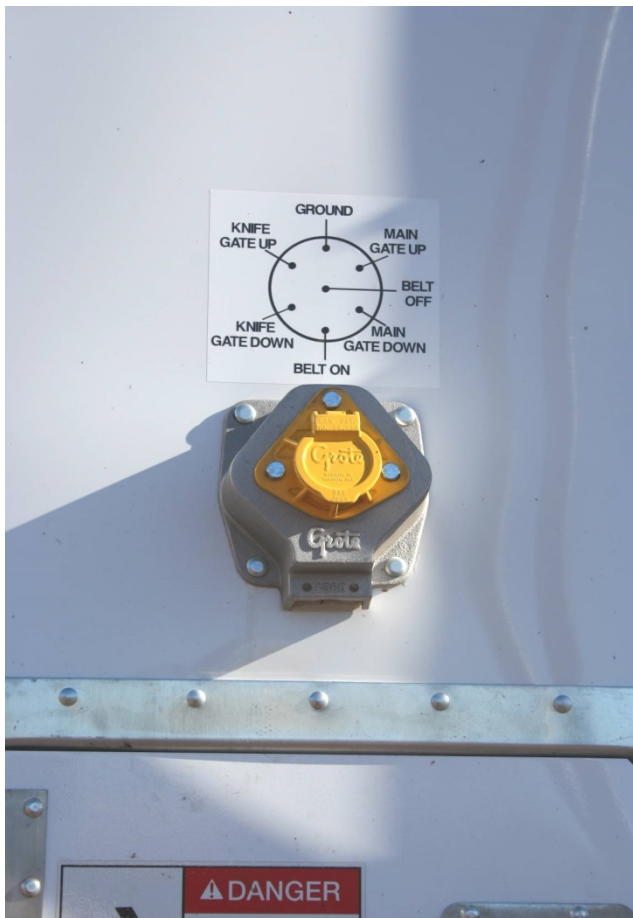
**HD LANDING GEAR 50000 LB**

**NEW LIFE 1013992K**

***NEW FOR 2009'S ALUMINUM BELT  
RETURN***

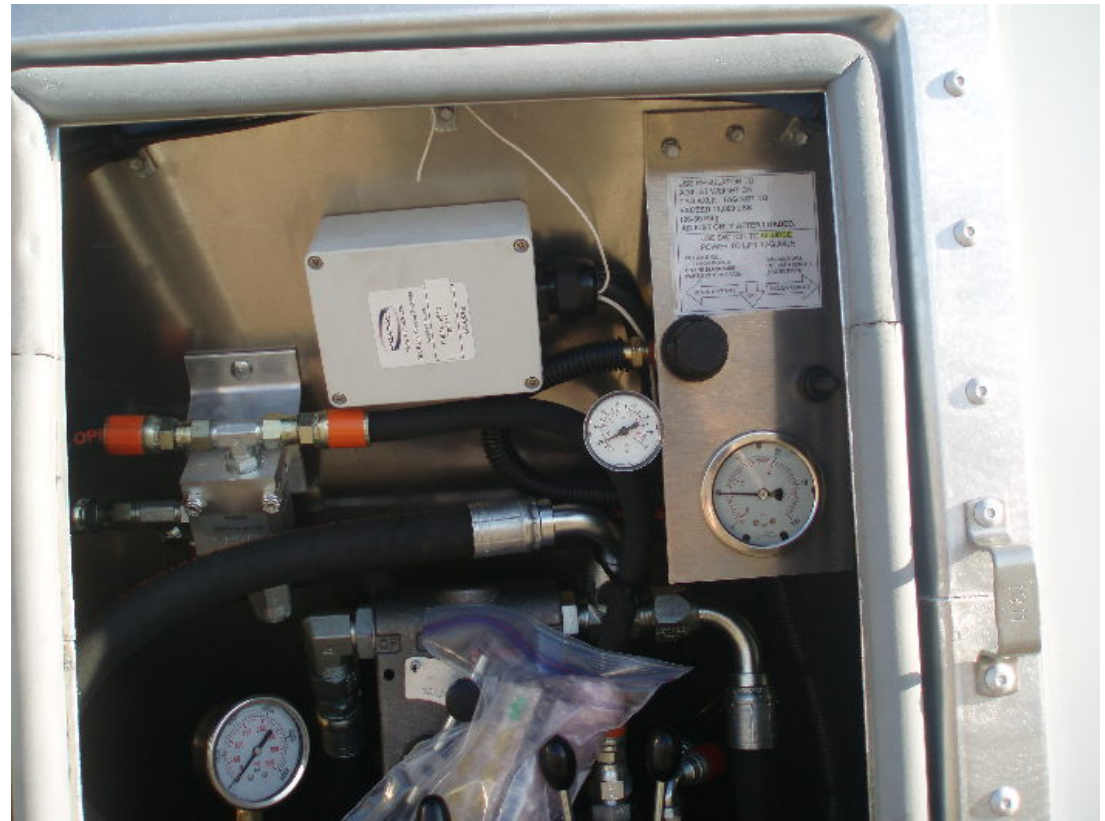


**FRONT COUPLER IS BOLT – ON , CAN BE REMOVED IF NEEDED FOR SERVICING THE BELT AND FRONT TAKE-UP ASSEMBLY**



**ELECTRICAL SOCKET FOR CAB CONTROL OF THE HYDRAULIC VALVE MOUNTED AT THE REAR OF THE TRAILER**

**THIS IS PAINTED YELLOW – DO NOT MISTAKE IT FOR THE TRAILER LIGHT SOCKET**



**NEW TO 2009'S THE CORDLESS REMOTE, REPLACES THE SECOND RECEPTACLE**





## **ELECTRICAL SOCKET FOR TRAILER LIGHTS AND ABS BRAKE POWER**

### **BLUE- CENTER PIN ABS & REMOTE POWER**

**WHITE- 12 O-CLOCK = GROUND**

**BLACK- 2 O-CLOCK = OPTIONS \***

**YELLOW – 4 O-CLOCK = LEFT TURN**

**RED – 6 O-CLOCK = STOP LAMPS**

**GREEN – 8 O-CLOCK = RIGHT TURN**

**BROWN – 10 O-CLOCK = ALL CLEARANCE**

**\*MOST TRAILERS WITH OPTIONAL BACK-UP LAMPS WILL ALSO HAVE A SWITCH ON THE CAST HOUSING TO OPERATE THEM.**

**LIFT AXLES CAN ALSO BE WIRED ON THE BLACK.**



**SPRING BRAKE VALVE**

**PART NUMBER SEAL CO  
110800**



**A B S BRAKE VALVE**

**PART NUMBER SEAL CO  
KIT #2 21-1-10S  
(2S-1M)**



**SUSPENSION LEVELING  
VALVE**

**PART NUMBER  
HENDRICKSON AKH-43-3**



**HENDRICKSON  
INTRAAX AAT  
17" RIDE  
HEIGHT.**

**(NON LIFTING)**

**ADJUST RIDE  
HEIGHT TO 17  
INCHES**

**( CENTER OF AXLE  
TO TOP OF AIR BAG  
SPACER)**

**BRAKE SHOES – 16.5 X 7**

**AUTO SLACK ADJUSTER 65175P**

**S-CAMS 20 5/8**

**HUB CAP 340-4009 STEMCO**

**BRAKE CHAMBERS BTS30/30-45**

**BRAKE DRUM 89996B MOTORWHEEL**

**WHEEL SEAL 340-4009 STEMCO**

**AIR BAG S-21800 (23K AXLES)**

**AIR BAG S-21784 (25K AXLES) #28 AND ON**

**HUB C-22549 HENDRICKSON (10-2011-141 WALTHER'S)**

**BEARINGS HM218248/HM212049**

***PLEASE REFER TO HENDRICKSON SUPPLEMENT FOR ALL OTHER PART  
NUMBERS***

## **AULICK INDUSTRIES**

### **LIMITED WARRANTY POLICY**

**WARRANTY:** Aulick Industries warrants that trailer model: \_\_\_\_\_, Serial number: \_\_\_\_\_ (hereinafter referred to as "Equipment") manufactured by Aulick Industries will be free from defects in materials and workmanship, provided that the Equipment warranted hereunder is operated by the purchaser in accordance with the practices approved by Aulick Industries with loads not exceeding the manufacturer's rated capacities and with loads that are not abrasive or corrosive in nature.

Aulick Industries sole obligation under this warranty shall be limited to repairing or replacing, at its option, in accordance with the schedule below, any defective part of the warranted Equipment, which shall be returned to Aulick Industries factory location or authorized service facilities and then Aulick Industries examination shall disclose to its satisfaction to have been defective; provided, however, that the purchaser notifies the Warranty Department immediately upon identification of defect, and such defective Equipment is returned by the purchaser to a Aulick Industries location authorized by the Warranty Department of Aulick Industries with transportation and freight charges prepaid within fifteen (15) days after discovery or defective conditions.

The customer shall not be required to deliver defective Equipment to Aulick Industries if the Equipment was destroyed as a result of defect covered in this warranty and the Aulick Industries Warranty Department is reasonably satisfied that the Equipment was defective at the time of the sale.

All labor and parts warranty must be authorized by Aulick Industries Warranty Manager. Failure to do so will result in no warranty payment of any kind.

**THIS WARRANTY IS EXPRESSLY IN LIEU OF ALL OTHER WARRANTIES OF MATERIAL, WORKMANSHIP, DESIGN, APPLICATION OR OTHERWISE WITH RESPECT TO ANY EQUIPMENT, WHETHER EXPRESS OR IMPLIED, INCLUDING WARRANTIES OF MERCHANTABILITY AND FITNESS FOR A PARTICULAR PURPOSE, AND OF ALL OTHER OBLIGATIONS OR LIABILITIES ON THE PART OF AULICK INDUSTRIES.**

#### **Warranty Schedule Components and Structural**

- I. Axles, Suspensions, Landing Gear, Wheels, Rims, Hydraulic components Brakes ,and other manufactured items carry their own individual warranty**
  
- II. Frame and all structural components , plastic liner , rear gate , knife gate , chain and flaps and rubber seals are warranted for one (1) Year from date of purchase on New trailers**

